

# ROOF RACK SYSTEM

MODEL-ADAPTED SOLUTIONS FOR LCVS



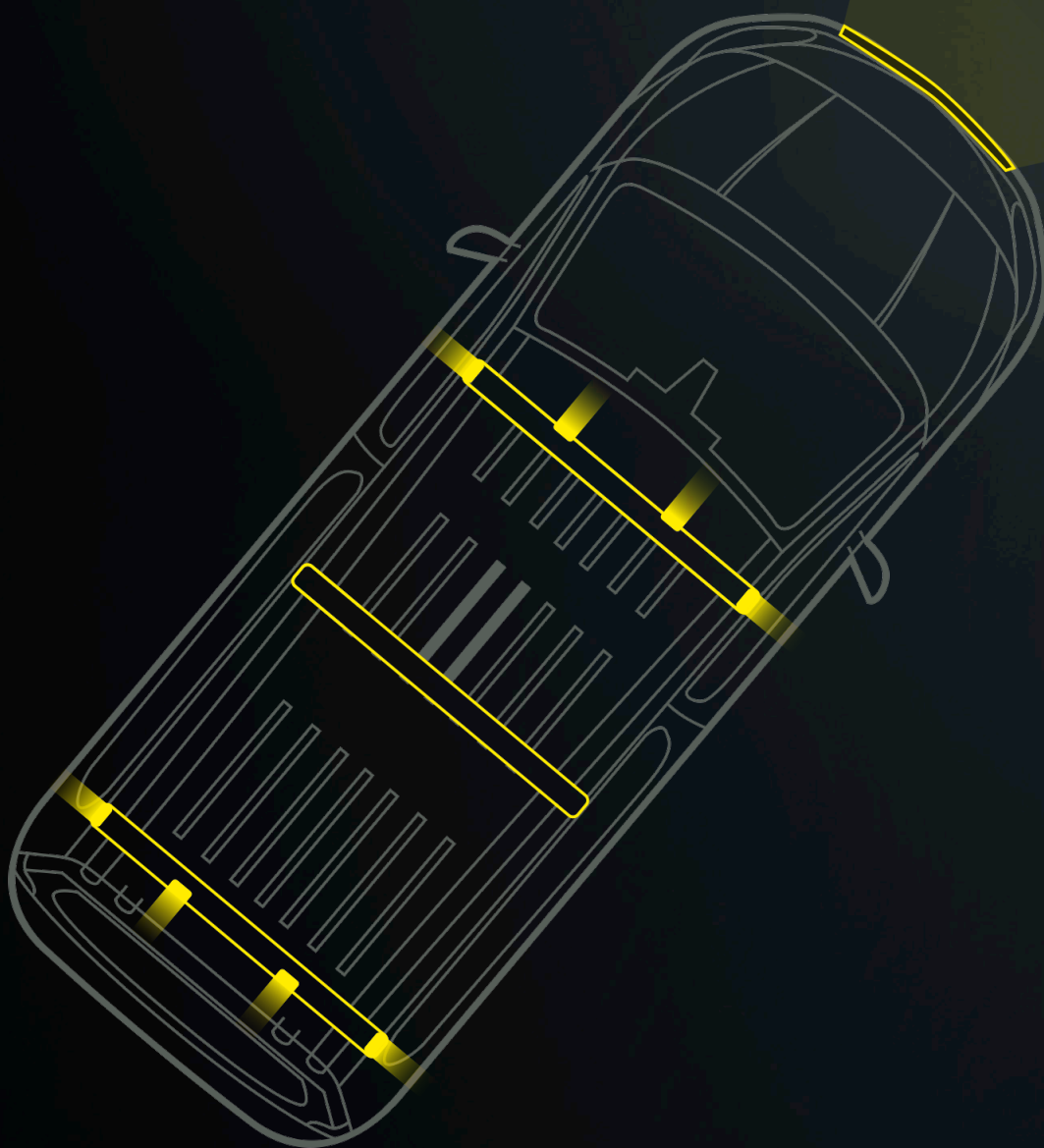
**AWIMEX**  
YOUR NEED - OUR SOLUTION

**strands**<sup>®</sup>  
-lighting division

# ROOF RACK SYSTEM

---

This is the next generation of professional vehicle equipment. A sleek, vehicle-specific system that blends high-visibility lighting with serious load-handling capability – all in one streamlined solution. Designed to elevate both performance and appearance, C-Rack delivers a factory-finish look that stands out on the road and gets the job done, day in and day out.



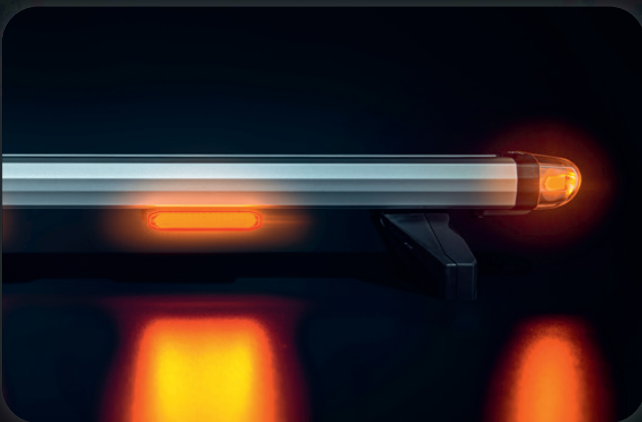


## PASSION FOR EVERY DRIVER EVERY DAY

Strands Lighting Division exists to help professionals deliver the best. Whether you're equipping a single service van or an entire fleet, our mission is simple: make your job easier, your installs faster, and your customers more satisfied. Choose the lighting system that's built to perform, built to last, and built for your business.

## MODEL-ADAPTED SOLUTION

The roof rack system is available for 34 LCV models with 213 configuration options. Thanks to the plug-and-play setup, along with the use of factory points, installation can be done in under an hour with no cutting or modification. The lighting is integrated directly into the rack profile, maintaining aerodynamics and delivering a clean, factory-style look that dealers and end-users love.



## ROOF RACK SYSTEM

This system combines load capacity with built-in warning lights. With different accessories, you can secure your load efficiently and safely. The C-Rack roof rack is designed to use the vehicle's existing mounting points, removing the need for drilling. It is ECE R65 approved (Class 1 & 2), crash-tested, and made from corrosion-resistant materials to handle daily professional use.



# ROOF RACK SYSTEM FOR COMMERCIAL VEHICLES

---

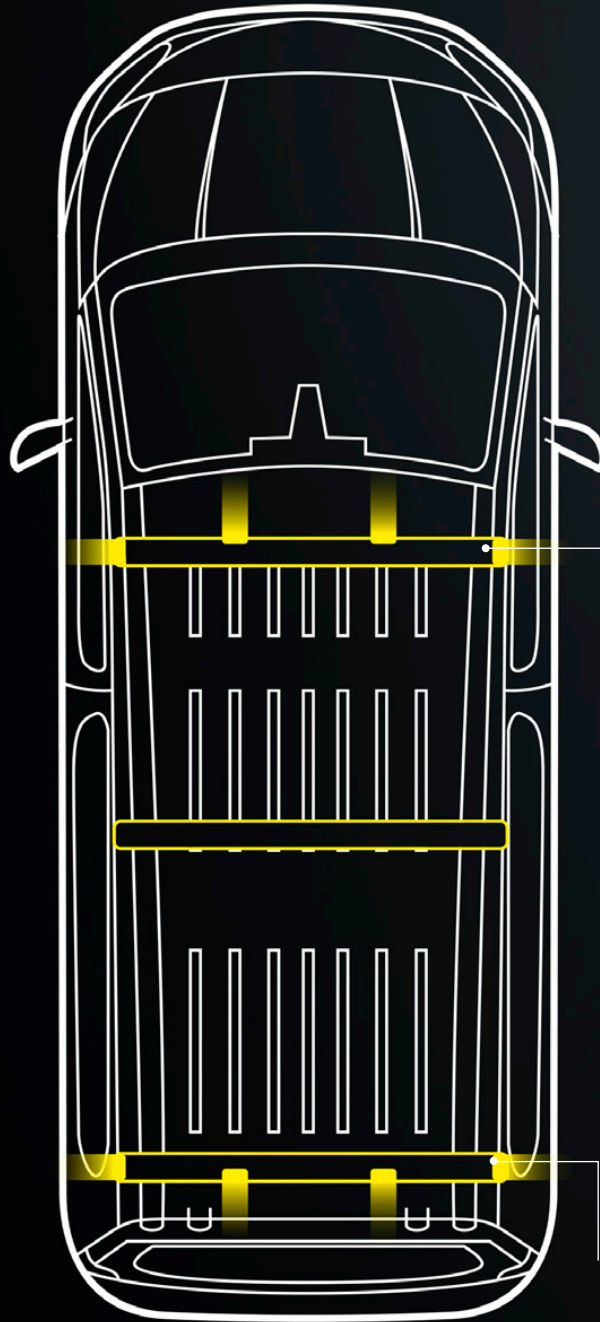
This is more than a rack. It's a high-functioning, model-adapted system that combines load capacity with integrated, high-visibility warning lighting. Designed to use existing factory mounting points, it eliminates the need for drilling or modifications. Each unit is ECE R65 approved (Class 1 & 2), crash-tested, and built with non-corrosive materials to endure daily professional use.

- ✓ FITS 34 LCV MODELS
- ✓ 408 CONFIGURATION OPTIONS
- ✓ INTEGRATED LED WARNING LIGHTS
- ✓ LOAD CAPACITY: 50 KG PER RACK
- ✓ PLUG-AND-PLAY INSTALL USING ORIGINAL FIX POINTS – NO DRILLING
- ✓ ECE R65 CLASS 1 AND 2 APPROVED
- ✓ WEATHER-RESISTANT AND CORROSION-PROOF STRUCTURE



# CRUISE LIGHT C-RACK

- ✓ ADJUSTABLE ROOF RACKS
- ✓ ECE-R65 CLASS 1 & 2
- ✓ EASY INSTALLATION
- ✓ 180° ANGLE



You can have 2 or 4 lamps on the front roof rack, and either two or no end-caps.

You can have 2 or 4 lamps on the rear roof rack, and either two or no end-caps.

# WHY IT STANDS OUT

The C-rack has two additions: The FLEX Anchor and the FLEX Load stop. They can be installed by inserting and twisting them into place in the groove along the length of the rack. They can be adjusted without needing to remove the end cover, making your workday smooth and efficient.



The roof rack system will keep you and your cargo safe during long workdays. The FLEX Load stop will keep the cargo secure on the rack by providing stops on the sides.



When working in demanding environment, transport safety is key. The cargo can be transported securely by attaching, e.g., a tensioning belt or strap to the FLEX Anchor.

This system stands out for its versatility and adaptability. Choose the number of end-cap and directional warning lights you need to ensure you are seen from all directions, and use the rack with the FLEX accessories to maximize the available load capacity. The combination of visibility, load capacity, and model-specific fit makes the roof rack system a must-have for any professional.

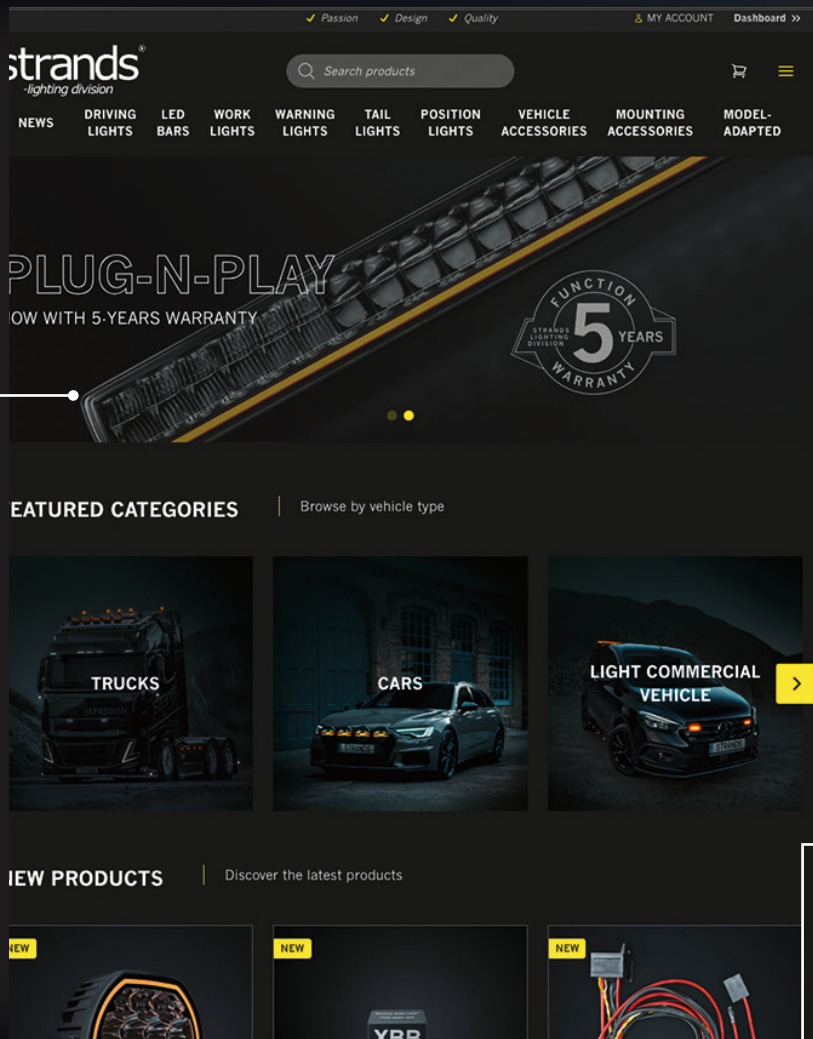


Use the QR code to check out the product.

# FOUR SIMPLE STEPS TO FIND YOUR RRS SOLUTION

## WEBSITE

Go to strandseurope.com



## CHOOSE BRAND & MODEL

Choose your brand and your model on your vehicle

## TYPE

Choose roof rack system and see all options for your vehicle

10:48

strands

SV / EN

✓ Passion ✓

strands<sup>®</sup>  
-lighting division

Search products

MODEL

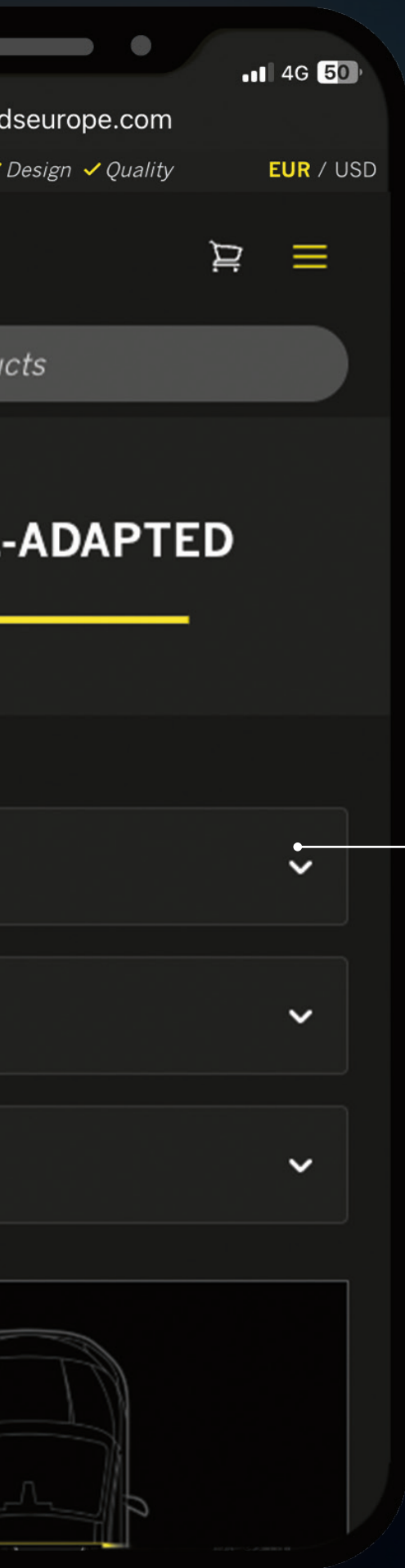
Fits to:  
FORD

Fits to:  
TRANSIT

Fits to:  
ROOF RACK KIT

AWIMEX  
YOUR NEED - OUR SOLUTION

strands<sup>®</sup>  
-lighting division



### CHOOSE BRAND & MODEL

Choose your brand and your model on your vehicle



## WHY PROS CHOOSE IT

Safety, efficiency, and adaptability. With the roof rack system professional drivers will get a reliable product that will perform well in any work situation. E-approved, crash-tested, and easy to install: all to keep both driver and cargo safe on the road and in the work place. The C-Rack is installed with plug-and-play and available for a wide range of different LCV models.



Scan the QR-code for tutorial

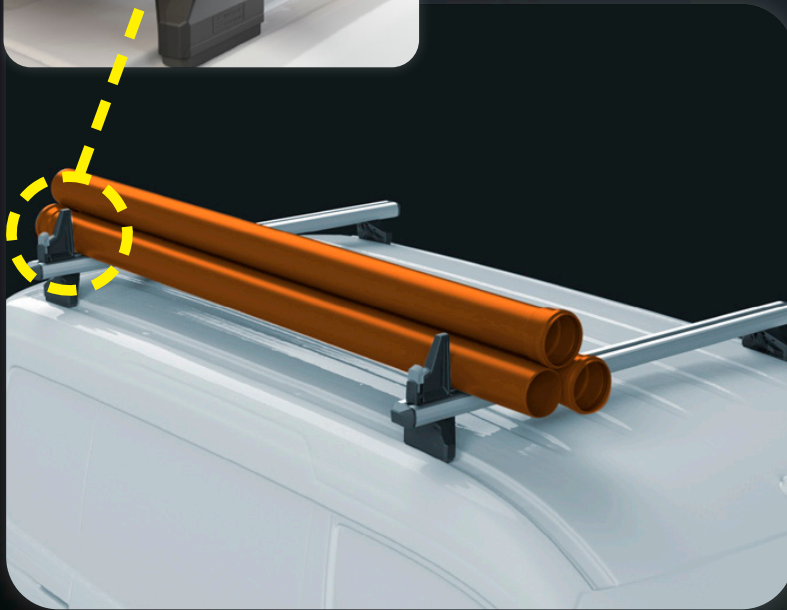
**AWIMEX**  
YOUR NEED – OUR SOLUTION

**strands**<sup>®</sup>  
-lighting division

# INSTAL



Securing your cargo is easy with the FLEX Anchor and the FLEX Load Stop. Install by inserting and twisting them into place in the groove along the length of the rack. The FLEX Load stop will keep the cargo secure by providing side stops.



- ✓ *FIX POINTS – ZERO DRILLING*
- ✓ *CONNECT WITH PLUG-AND-PLAY*
- ✓ *SECURE CARGO WITH FLEX LOAD STOP AND ANCHOR*
- ✓ *CUSTOMIZE TO SUIT YOUR NEEDS*



## FLEX ANCHOR

Secure your cargo by attaching, e.g., a tensioning belt or strap to the FLEX Anchor (Part No. 850254).



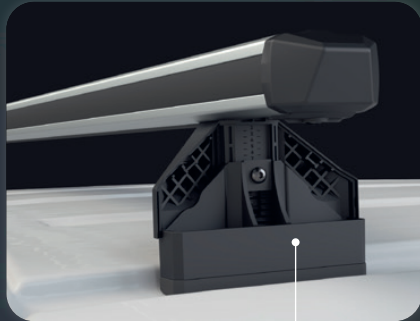
Part No. 850252

## FLEX LOAD STOP

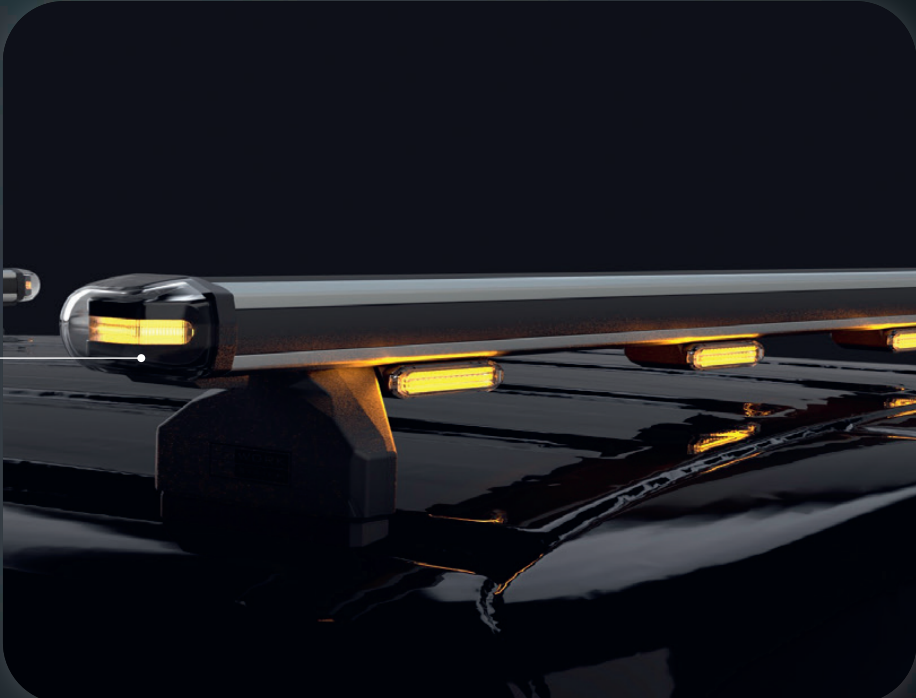
With our load stops, you can easily secure your cargo on the roof. They twist easily wherever you need and can also be stored at the back of the roof rack without getting in the way when not in use.

# LATION INSTRUCTIONS

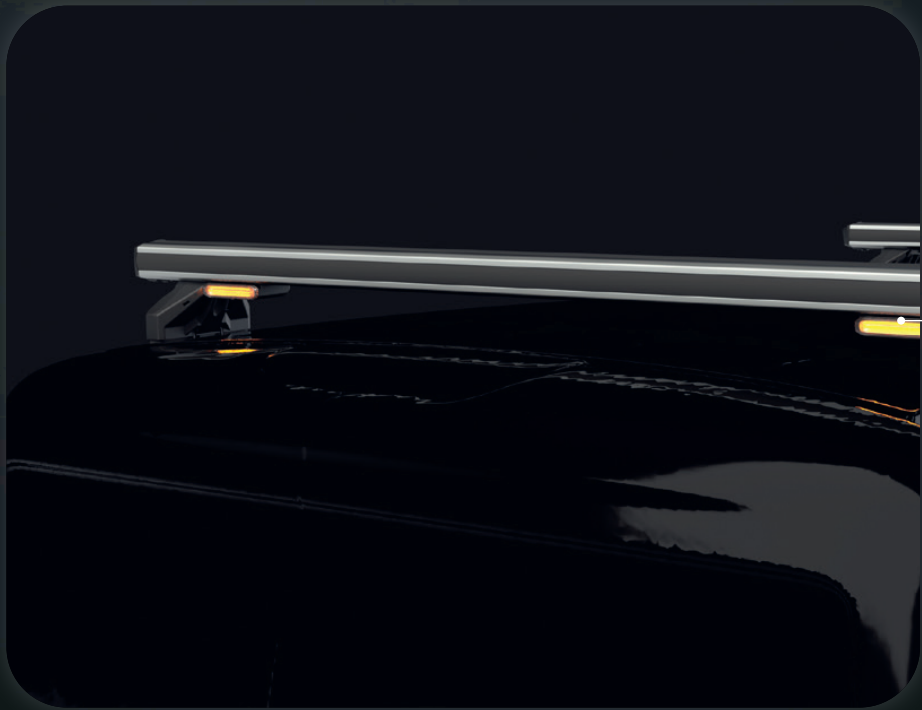
## C-RACK SYSTEM



Attach the rack by utilizing the vehicle's factory fix points. Use the plug-and-play connector to connect to the electric system.



Choose between none, two, or four lamps on the racks, and either none or two end cap lights.



The C-Rack is incredibly versatile regarding vehicle compatibility and adaptability to the driver's needs. Adjust the size and number of lights, and use the FLEX accessories to secure the cargo. The C-Rack system is E-approved and crash-tested.

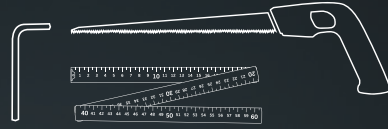
## KEEP IN MIND

Please read and understand all instructions before installing this product. By installing this roof bar, you assume full responsibility for its proper and secure attachment to your vehicle. Improper installation could result in damage to your car, the roof bar, or items being transported, and may cause injury. The manufacturer and seller are not liable for any damages or injuries that may occur due to incorrect installation or misuse of this product. Use this product at your own risk.

*Please note that the following instructions provide only a general assembly guide. Make sure to read the complete assembly manual specific to your model.*

## TOOLS YOU NEED

- SCISSORS/KNIFE
- HEX KEY SET
- MEASURING TAPE



1

When you have removed the bottom rubber strips find you hardware that comes with the kit.



2

The kit includes all the components you need. If you ordered the kit without the directional warning lights, you can purchase them separately on our website. An extension cable is provided for those who only have the endcaps.



3

Connect all the cables together. Be sure to screw the connections tightly to prevent water from entering the connectors.



4. If you need more space for the connecting cable from the other lights, you can feed it through this hole.



5. Install the directional warning lights first. If there is any excess cable, you can bend it back on itself to fit it neatly.



6. Mount the feet onto the rail by sliding them in from one side.



7. Mount the endcaps.



8. Secure the endcaps so they are tight against the frame. Leaving a gap between the frame and the light may cause extra wind noise while driving.



9. Measure and ensure the mounting feet are in the correct location. This will vary by vehicle, so we recommend a dry fit on the roof using the rubber feet supplied in the kit. If this step is not performed perfectly, it will leave gaps in the rubber strips.



10. Secure the feet in place with a torque of 5 Nm.



11. Secure the directional warning lights with a torque of 5 Nm.



12. Cut the strips to the correct length and place them in the slot.

FINISH!



**AWIMEX**  
YOUR NEED – OUR SOLUTION

A  
**RELAIS**  
Group Company

**ADDRESS**

Fabriksgatan 27  
272 36 Simrishamn

**CONTACT US**

Phone: 0414-160 50  
E-mail: [info@awimex.se](mailto:info@awimex.se)



**YOUTUBE.** *Subscribe at Strands Lighting Division for innovative lighting in action and get detailed information about our products.*



**LINKEDIN.** *Follow us at Strands Group AB for industry insights, news, and exciting updates.*



**WEBSITE.** *Visit [www.strandsseurope.com](http://www.strandsseurope.com) for detailed information about our products.*



**INSTAGRAM.** *Follow us at @strandslightingdivision for inspiration, exciting news, and participate in competitions.*



**FACEBOOK.** *Like Strands Lighting Division, engage in discussions and be the first to know about product news.*



**strands**<sup>®</sup>  
-lighting division

*With reservation for misprints and possible changes.*