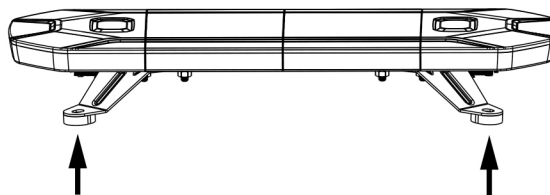
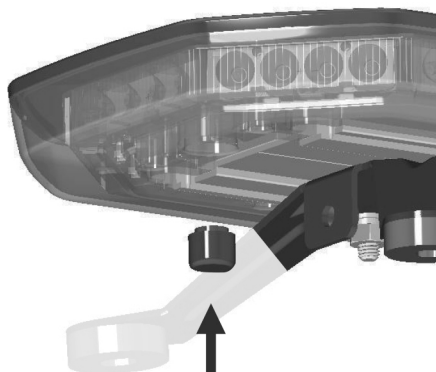


1. Sæt de to monteringsfødder på undersiden. Juster afstanden på de to fødder, så lysbroen passer på bilens tag. Stram derefter de fire bolte på hver monteringsfod.

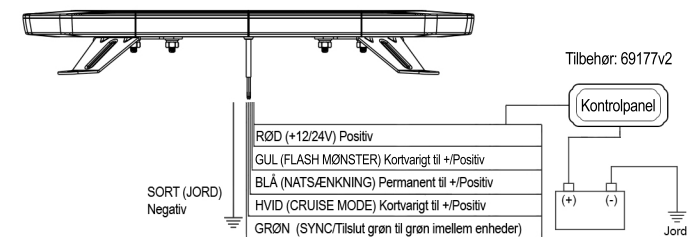
VENTILATION

Hvis der kommer fugt ind i enheden, er der ventilationshuller på undersiden. Fjern propperne fra ventilationshullerne, og lad fugten tørre. Sæt derefter propperne i igen.



2. Sæt lysbroen på bilens tag, og stram de fire bolte på de to monteringsfødder.

Spænding: 10-30V
Temperatur: -40°C til +70°C

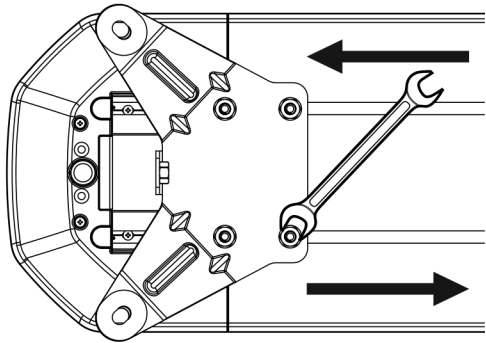


Der er mulighed for tilkobling af eksternt trykpanel (Varenr 69177V2) for styring af lysbro i form af ON/OFF – Blink mønster – Natsækning – Visuel visning af blink mønster. Ved installation uden eksternt trykpanel, skal RØD forbindes til (+) og SORT til (-). Når der skal skiftes blink mønster, sættes GUL til (+) kortvarigt. BLÅ monteres til (+) for at aktivere Natsækning = lyseffekt reduceres med 50% (monteres typisk over en afbryderkontakt, så dette kan aktiveres/deaktiveres efter ønske). HVID tilsluttes kortvarigt til (+) for at aktivere "Cruise Mode". Dermed vil lysbroen ikke blinke men lyse konstant men kun med 30% lysstyrke. Hvis der monteres flere lysbroer som skal blinke synkront, skal GRØN ledning fra alle lysbroer forbindes sammen.

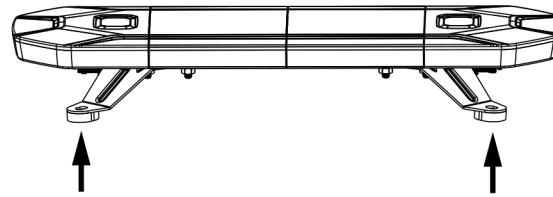
OBS – Før dette gøres skal der manuelt vælges samme blink mønster på alle lysbroer – hvis ikke dette overholdes, vil lysbroer ikke blinke synkront. Det er ikke muligt at benytte eksternt trykpanel (Varenr 69177v2 Advanced) hvis flere lysbroer er monteret i serie med hinanden, skal der benyttes en standard afbryderkontakt.

Patterns

1	Single Flash By Day (ECE R65 Class 2)	125FPM	8	Tracking Flash: Alt. In&Out	75FPM
2	Single Flash By Night (ECE R65 Class 2)	125FPM	9	Tracking Flash	150FPM
3	Double Flash	125FPM	10	Cruise	—
4	Triple Flash_Alt. Front&Back/All	22FPM	11	Center Arrow	75FPM
5	Triple Flash_Alt. Middle/Two Ends/All	22FPM	12	Left Arrow	37.5FPM
6	All(Single Flash) /All(Quadruple Flash)	53FPM	13	Right Arrow	37.5FPM
7	Single Flash:Alt. Left&Right Half	130FPM			

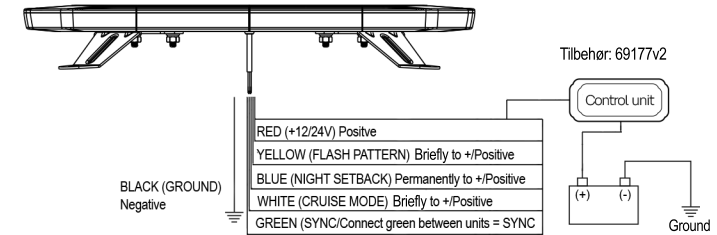


1. Put the two mounting feet onto the aluminium base. Adjust the two feet's distance to make the lightbar fit on the car roof. Then tighten the four bolts of each mounting foot.



2. Put the lightbar on the car roof and tighten the four bolts of the two mounting feet.

Voltage: 10-30V
Temperature: -40°C til +70°C

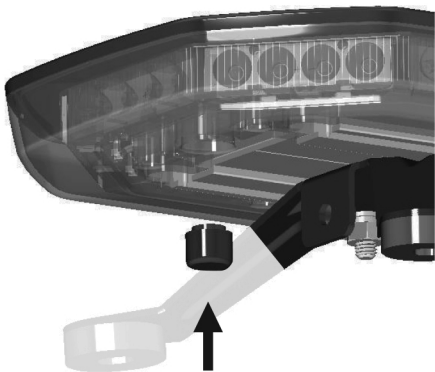


It is possible to connect an external control panel (Item no. 69177v2) for controlling of the light bridge (ON / OFF - Flashing pattern - Night setback - Visual display of flashing pattern). For installation without external control panel, RED must be connected to (+) and BLACK to (-). When changing flashing pattern, set YELLOW to (+) briefly. BLUE is mounted to (+) to activate Night setback = light power is reduced by 50% (typically mounted via a switch so that this can be activated / deactivated as needed) WHITE is briefly connected to (+) to activate "Cruise Mode". Thus, the light bridge will not flash but light constantly but only with 30% brightness. If several light bridges are to be installed and flash synchronously, the GREEN wire from all light bridges must be connected together.

NOTE - Before doing this, manually select the same flashing pattern on all light bridges - if this is not done, the light bridges will not flash synchronously. It is not possible to use the external control panel (Item no. 69177v2) if several light bridges are mounted in series with each other, a standard switch must be used.

VENTILATION

If moisture enters the hood, there are ventilation holes on the underside. Remove the lids from the ventilation holes and allow the moisture to dry out. Then reassemble the lids.



Patterns					
1	Single Flash By Day (ECE R65 Class 2)	125FPM	8	Tracking Flash: Alt. In&Out	75FPM
2	Single Flash By Night (ECE R65 Class 2)	125FPM	9	Tracking Flash	150FPM
3	Double Flash	125FPM	10	Cruise	—
4	Triple Flash_Alt. Front&Back/All	22FPM	11	Center Arrow	75FPM
5	Triple Flash_Alt. Middle/Two Ends/All	22FPM	12	Left Arrow	37.5FPM
6	All(Single Flash) /All(Quadruple Flash)	53FPM	13	Right Arrow	37.5FPM
7	Single Flash:Alt. Left&Right Half	130FPM			