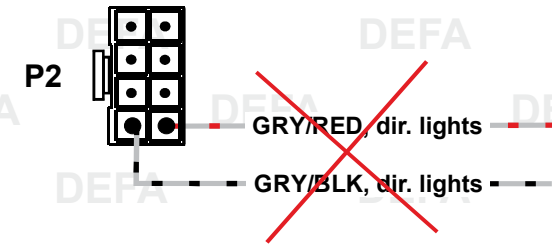


Attention !!

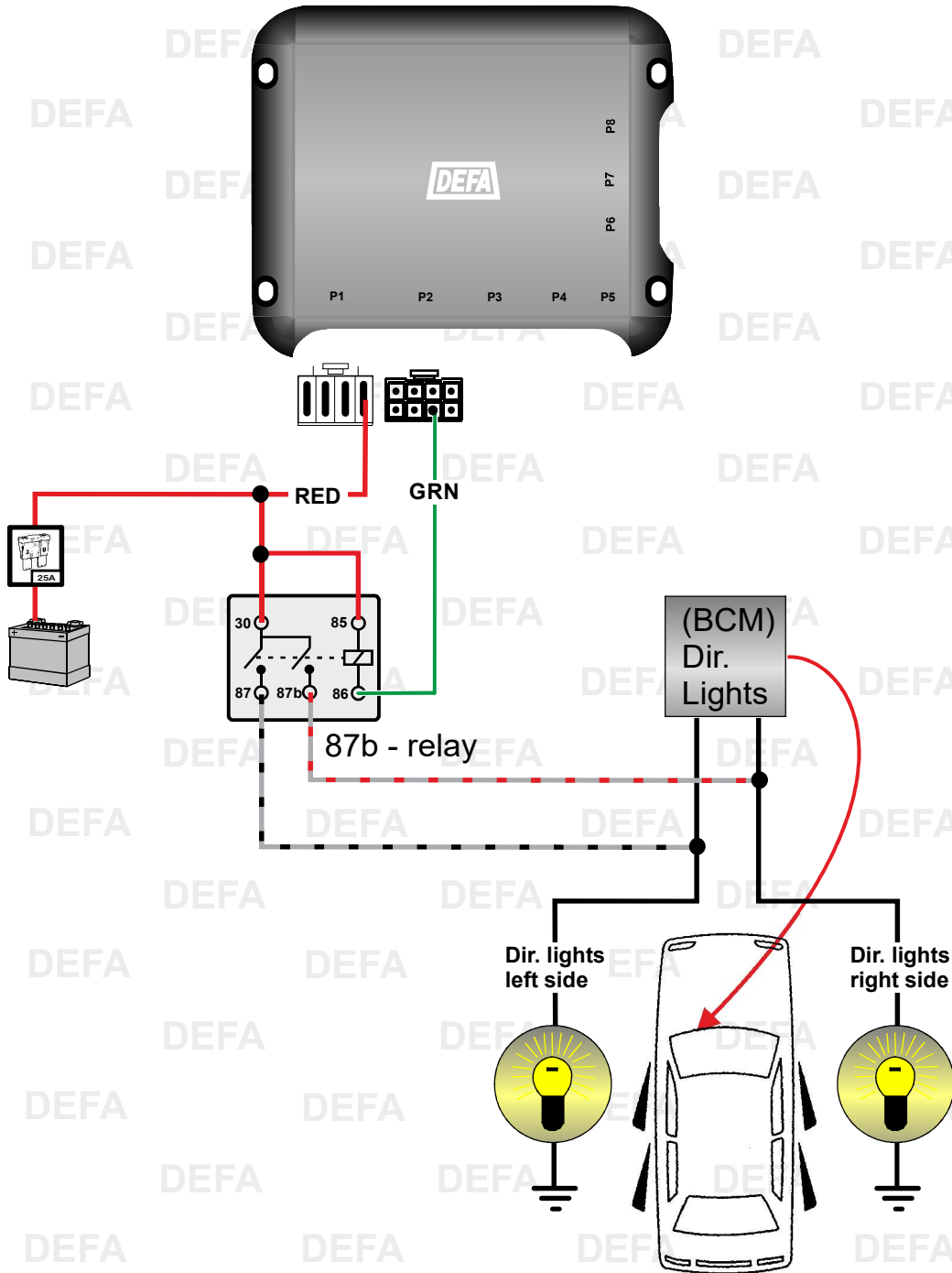


Do not use GRY/RED and GRY/BLK.
The two outputs are temporary disabled due to high component cost.
The change has effect from 01.02.2022 and until this note is removed from the product.

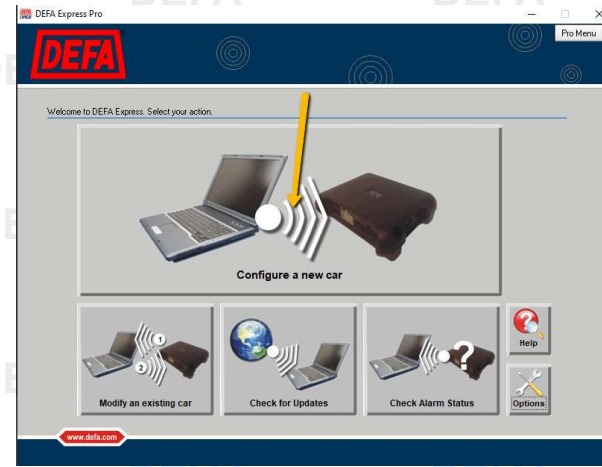
When GRY/RED and GRY/BLK are found in a car specific installation diagram, please replace them as follows:

See next page.

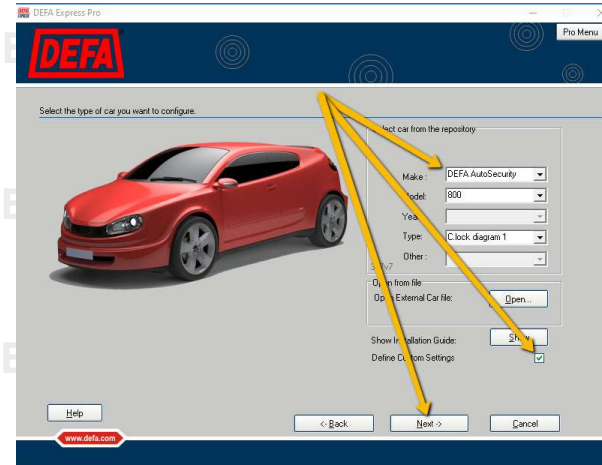
1. Add relay (87b) for direction lights:
Note! The relay is not included in the product.



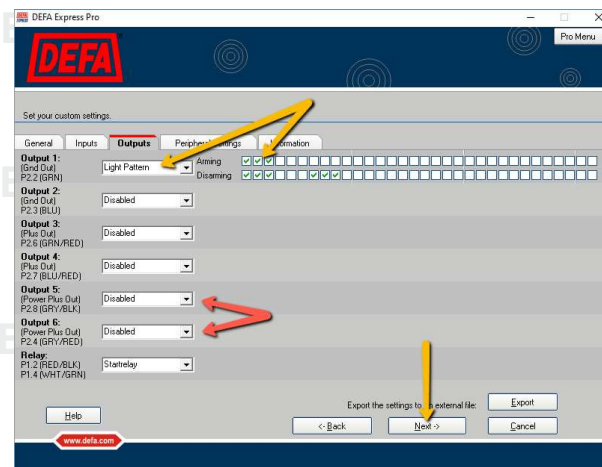
2. Set output 1 as 'Light pattern' and program the central unit:



- 2a. Click on the 'Configure a new car' button.



- 2b. Select vehicle.
- 2c. Tick off the 'Define Custom Settings' tick-off box.
- 2d. Click 'Next'



- 2e. Set 'Light Pattern' for Output 1 in the Outputs folder.
- 2f. Click 'Next'.